

**YEAR 11 PARENTS /  
GUARDIANS**

**CAREERS INFORMATION  
EVENING**

**Rudolph Salmon**

Careers Adviser

# Aims

- Introduce the careers support available at school.
- Outline the main post-16 options.
- Consider some resources that can improve decision making.

# Careers Advice

Informed Choice

# Information, Advice & Guidance

- Client centred.
- No right or wrong answers.
- Access to up to date information.
- Impartial support to understand & interpret information.
- Client's goals & action points.

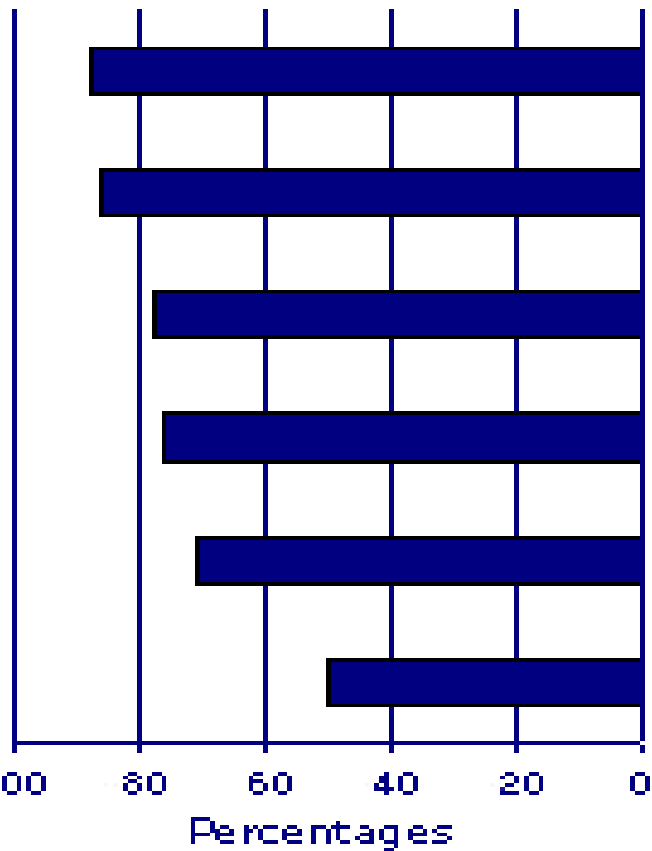
# Post 16 Options

- Full time Education
- Work Based Training
- Employment (+ part-time study)

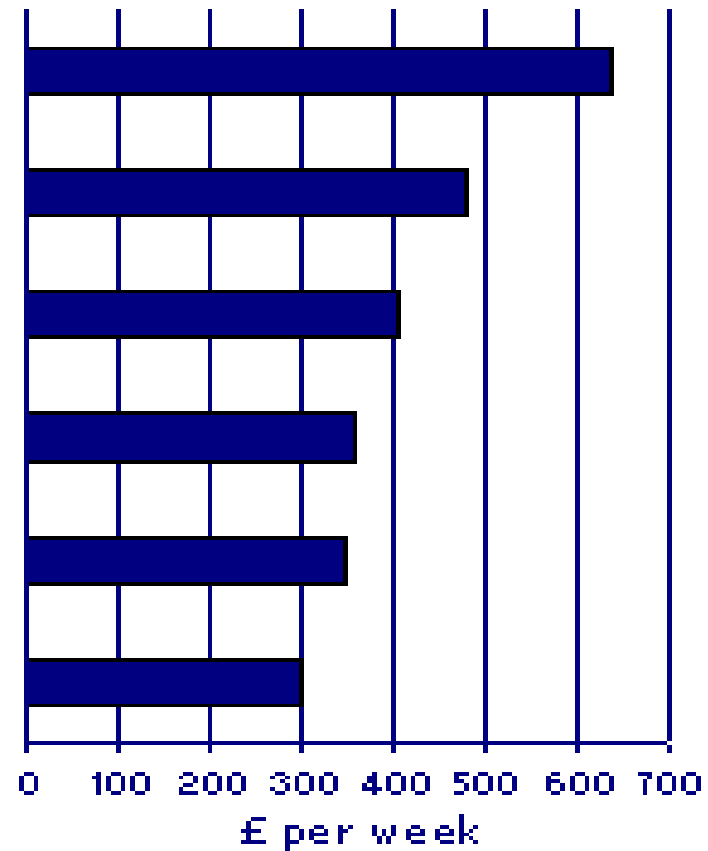
	UNIVERSITY			
LEVEL 8	<b>Doctorate</b> PhD			
LEVEL 7	<b>Master's Degree</b> MA, MSc, MPhil			
LEVEL 6	<b>University Degree</b> BA, BSc			
LEVEL 5			<b>Foundation Degree</b> FdA, FdSc	<b>HND</b>
LEVEL 4				<b>HNC</b>
LEVEL 3	<b>A-Level</b>	<b>A2</b> <b>AS</b>	<b>L3 Extended Diploma</b> (National Diploma)	<b>L3 Diploma</b> (National Certificate)
LEVEL 2	<b>GCSE</b> Grades A-C		<b>L2 Diploma</b> (1st Diploma)	
LEVEL 1	<b>GCSE</b> Grades D-G		<b>L1 Diploma</b> (Foundation)	
ENTRY LEVEL 3	<b>Key Stage 3</b>		<b>E3 Diploma</b> (Foundation)	
	<b>SCHOOL / 6TH FORM</b>		<b>F.E. COLLEGE</b>	

# Qualifications = more pay & employment

Employment rates



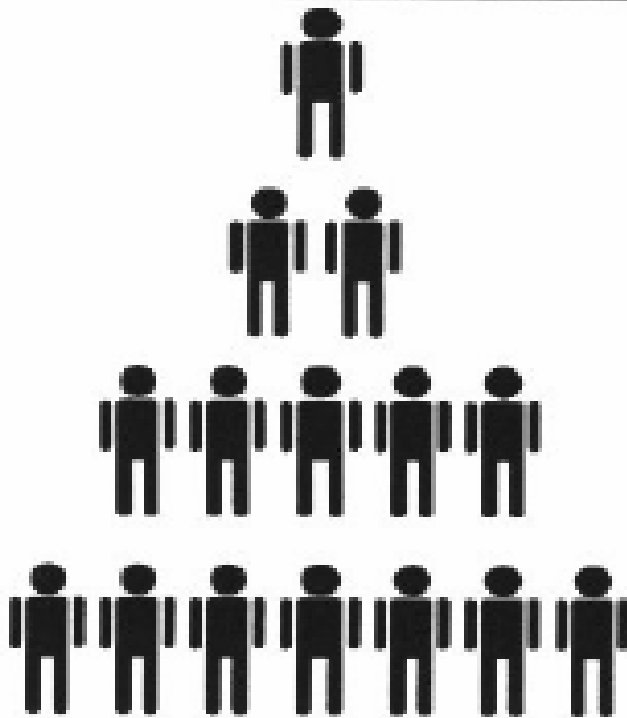
Gross weekly earnings





# The old workplace

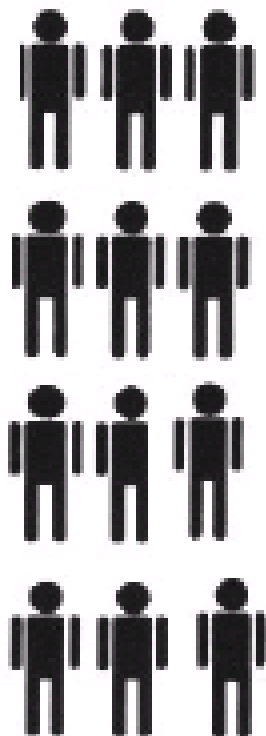
**25 years ago**



- Highly Skilled (professional)
- Very Skilled (technician)
- Skilled (craft)
- Unskilled/Semi Skilled (operative)

# The new workplace

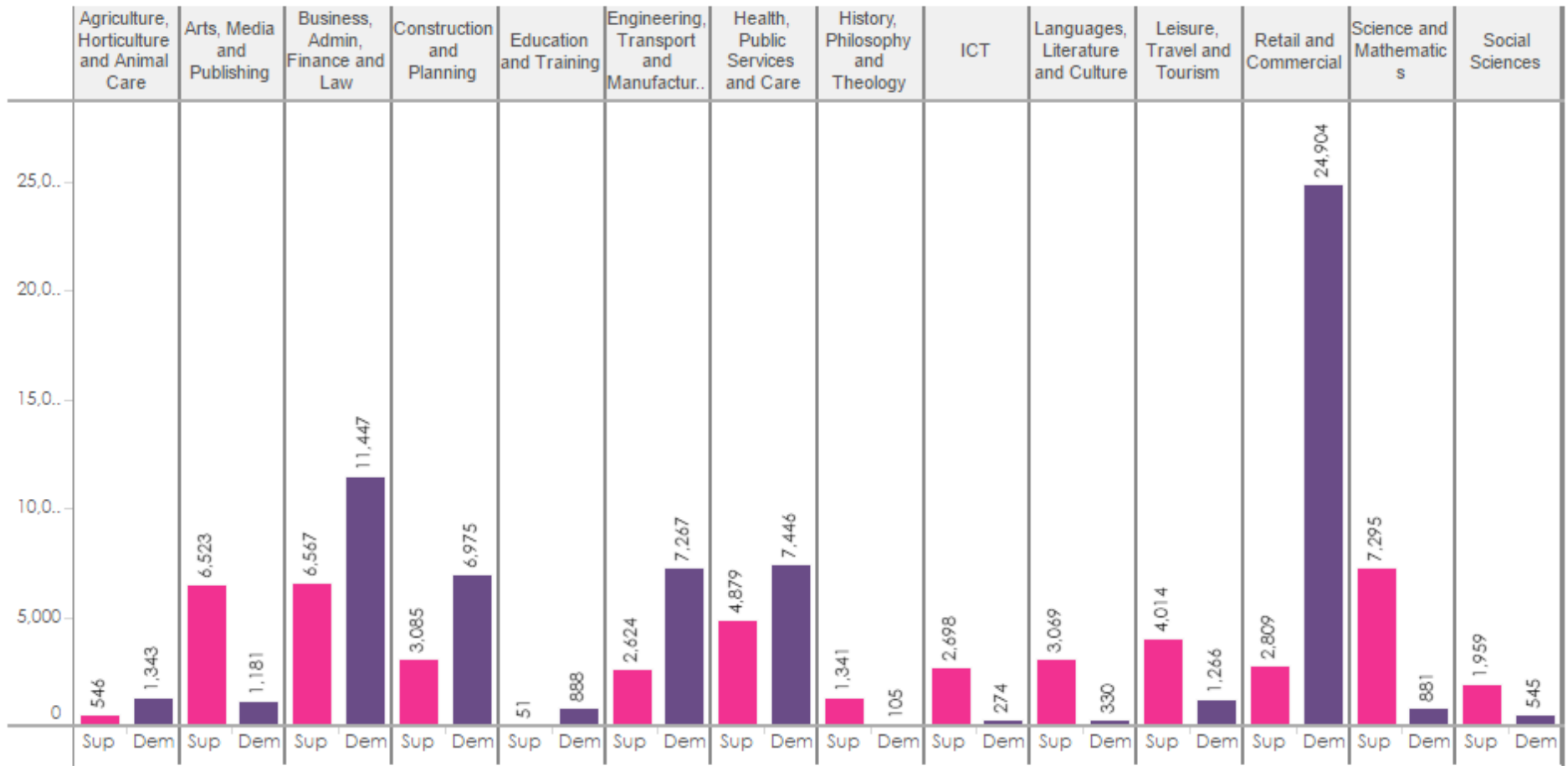
## Now



- Highly Skilled (professional)
- Very Skilled (technician)
- Skilled (craft)
- Unskilled/Semi Skilled (operative)

**Year:** 2016   
 **Qual Level:** (All Below Level 4)   
 Remove learners (supply) for progression to university: Yes   
 Show supply by Qualification Type: Academic & Vocational   
 Colour bars by...: Supply/Demand

Sup = **Projected New Supply** from Education (If a learner is doing multiple courses they are apportioned between bars)  
 Dem = **Projected Unmet Demand** (Unique vacancies not anticipated to be met from the existing workforce)



Supply Qualification Type: Academic & Vocational

Remove supply for progression to university: Yes

Sector: ICT

Year: 2016

Level: (All Below Level 4)

Locations: (All)

### Skills Supply

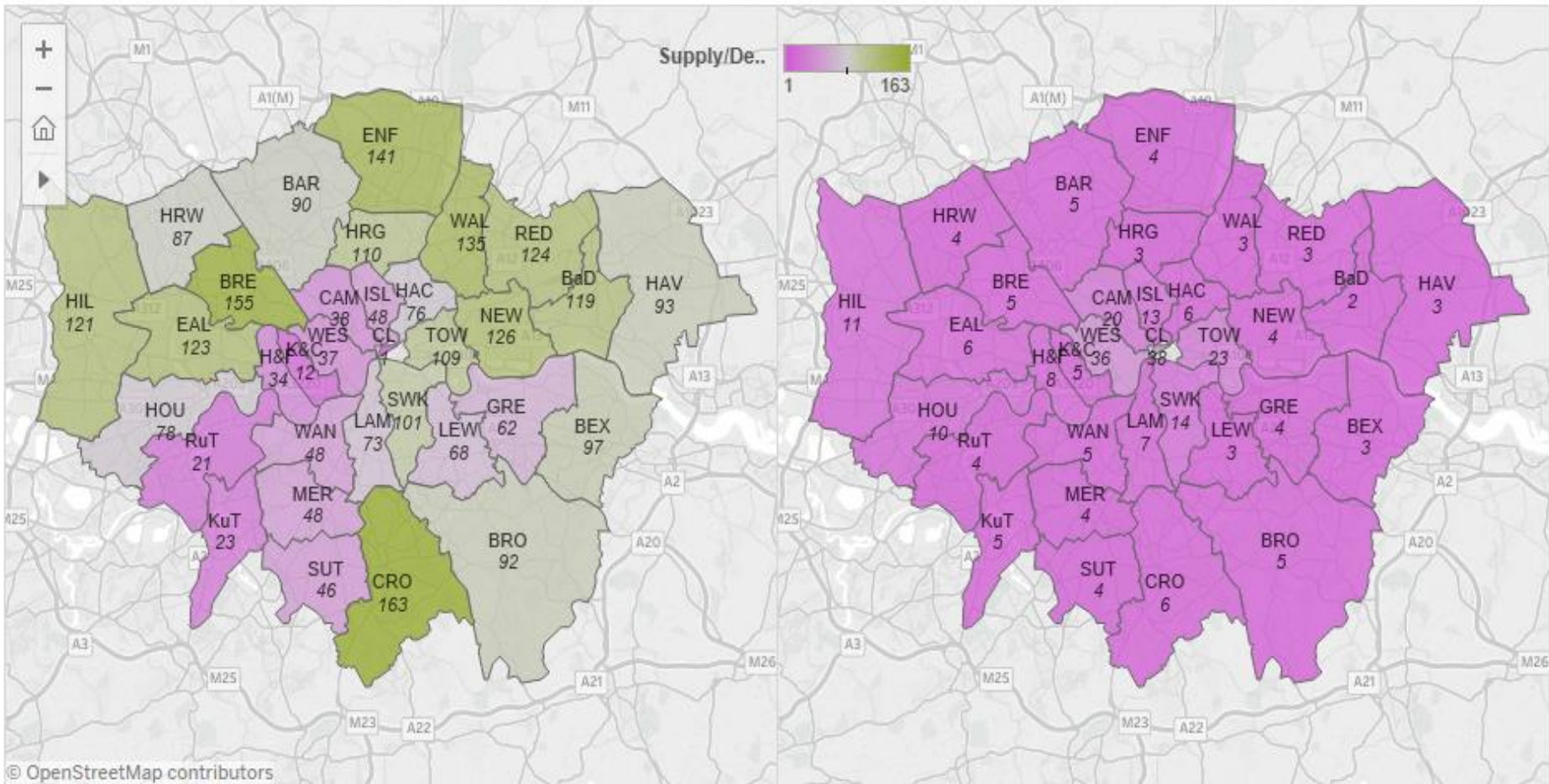
(New from education)

Projected qualifiers below level 4 in 'ICT'

### Unmet Employer Demand

(Vacancies not met from existing workforce)

Projected vacancies below level 4 in 'ICT'





Supply Qualification Type: Academic & Vocational

Remove supply for progression to university: Yes

Sector: Construction and Planning

Year: 2016

Level: (All Below Level 4)

Locations: (All)

### Skills Supply

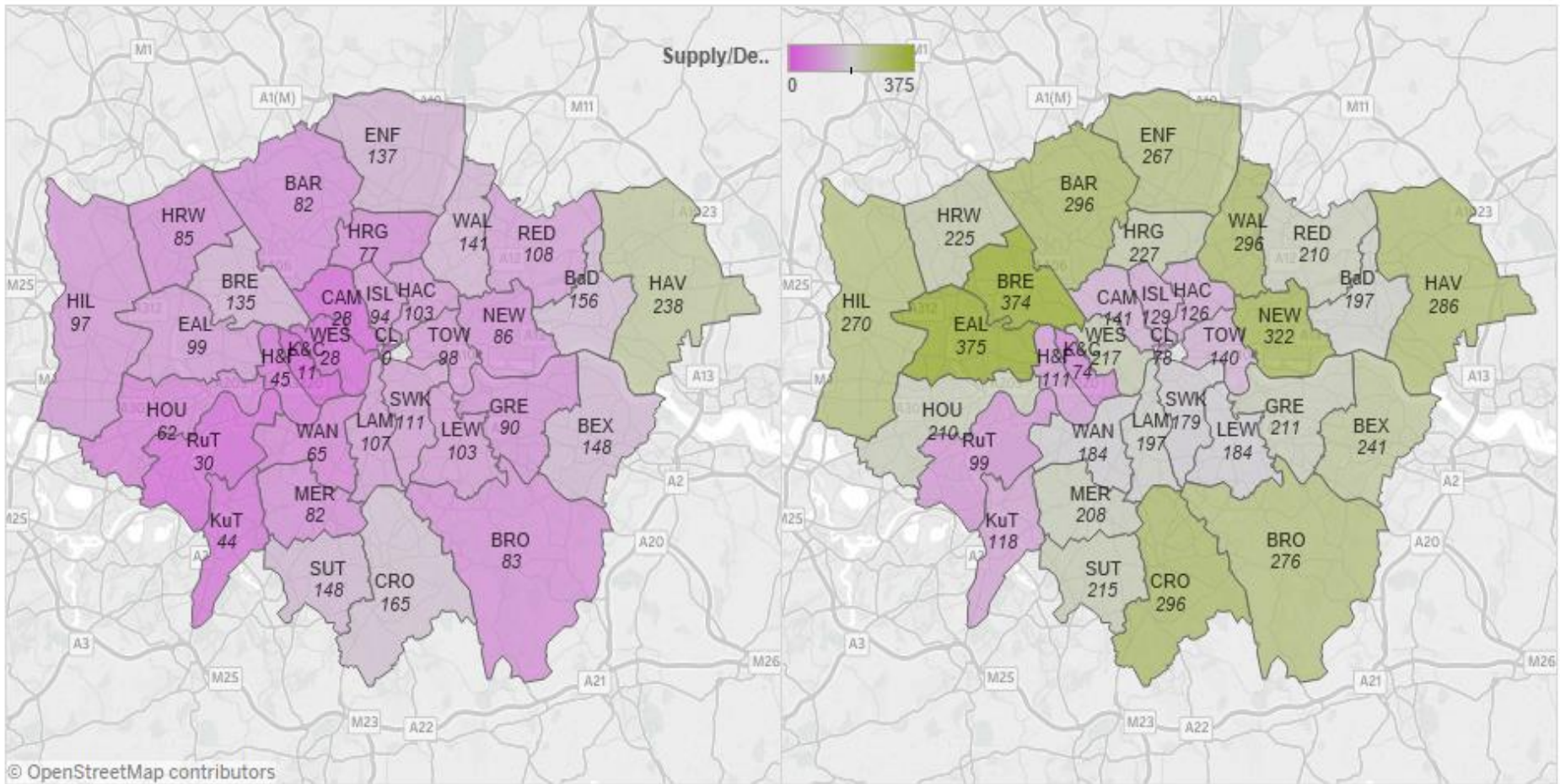
(New from education)

Projected qualifiers below level 4 in 'Construction and Planning'

### Unmet Employer Demand

(Vacancies not met from existing workforce)

Projected vacancies below level 4 in 'Construction and Planning'



© OpenStreetMap contributors

Supply Qualification Type: Academic & Vocational

Remove supply for progression to university: Yes

Sector: Health, Public Services and Care

Year: 2016 Level: (All Below Level 4) Locations: (All)

### Skills Supply

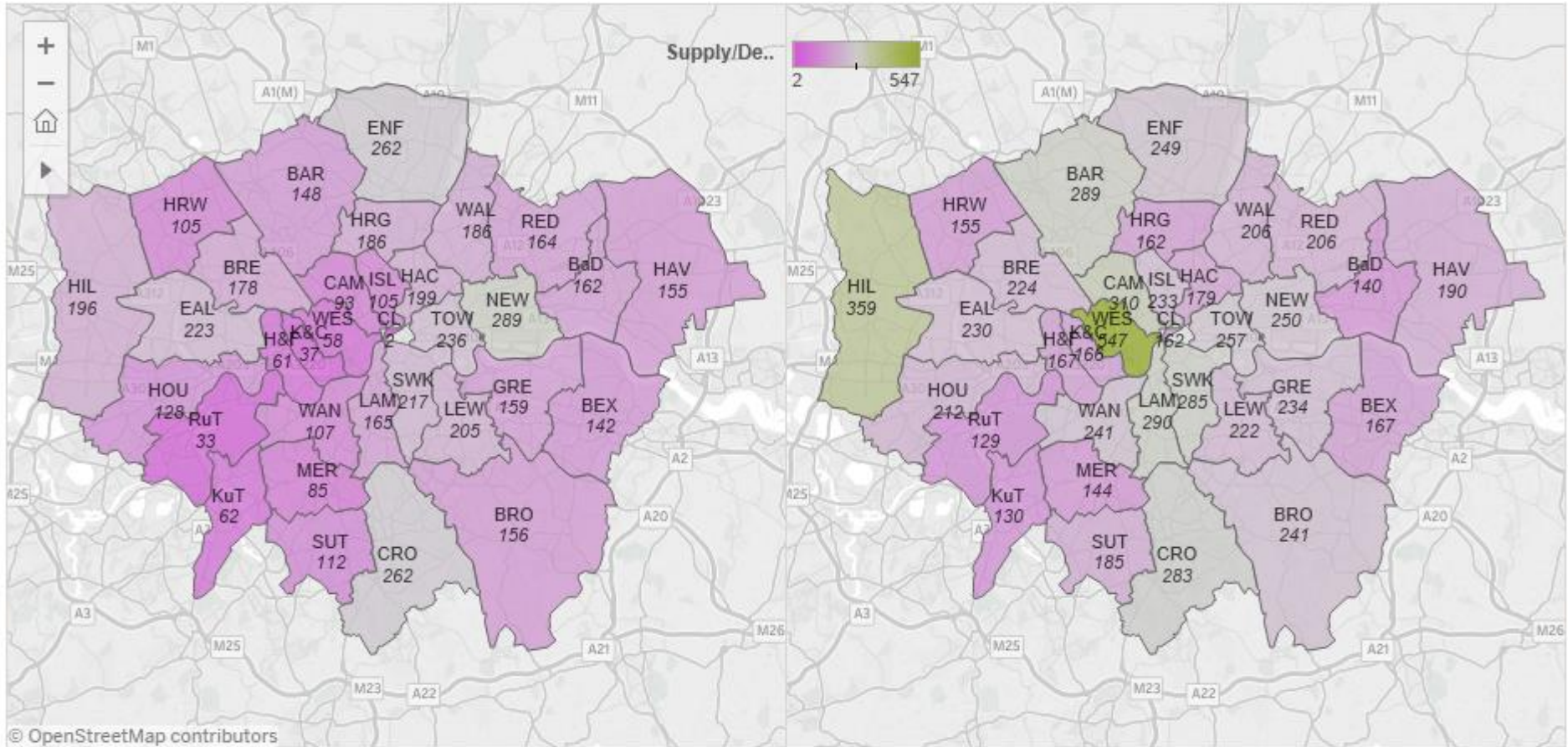
(New from education)

Projected qualifiers below level 4 in 'Health, Public Services and Care'

### Unmet Employer Demand

(Vacancies not met from existing workforce)

Projected vacancies below level 4 in 'Health, Public Services and Care'



© OpenStreetMap contributors

# London Youth Labour Market Summary

# Employment

The latest figures for employment by industry sector (based on June 2016 data):

Sector	London %	UK %
Agriculture, Forestry & Fishing	0.0	1.1
Manufacturing	2.5	7.8
Construction	5.6	6.7
Wholesale, Retail & Vehicle Repair	11.3	14.6
Transport & Storage	4.8	4.6
Hospitality & Catering	6.5	6.7
IT & Communications	8.0	4.1
Finance	6.9	3.3
Real Estate	2.2	1.6
Professional, Scientific & Technical	13.4	8.7
Administration	9.9	8.5
Public Administration & Defence	4.0	4.3
Education	7.5	8.6
Health & Social Work	10.1	12.4
Arts, Entertainment & Recreation	3.7	2.8
Other Services	2.6	2.7





# Apprenticeships

The Find an apprenticeship service is run by the National Apprenticeship Service and advertises vacancies across the country. Looking at a sample of advertised vacancies in Central London (within 10 miles of Victoria station) on 31 October 2016:

Sector	Vacancy Adverts
Agriculture, Horticulture & Animal Care	6
Arts, Media & Publishing	8
Business, Administration & Law	636
Construction, Planning & the Built Environment	19
Education & Training	19
Engineering & Manufacturing Technologies	81
Health, Public Service & Care	596
Information & Communication Technology	133
Leisure, Travel & Tourism	27
Retail & Commercial Activity	481
Science & Mathematics	-



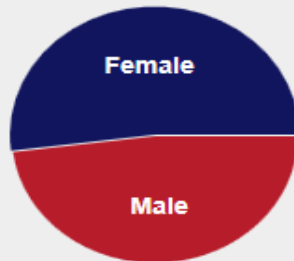
## Labour market information

Information is regularly and automatically streamed from national Labour Market Information data portals.

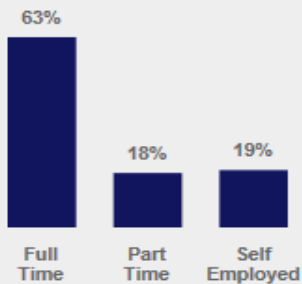
Average Salary  
**£72,280**

Average Weekly Hours  
**41**

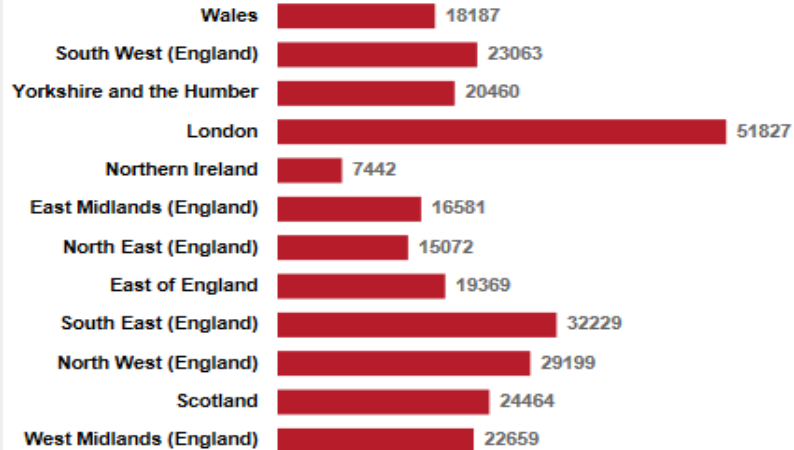
### Gender Split



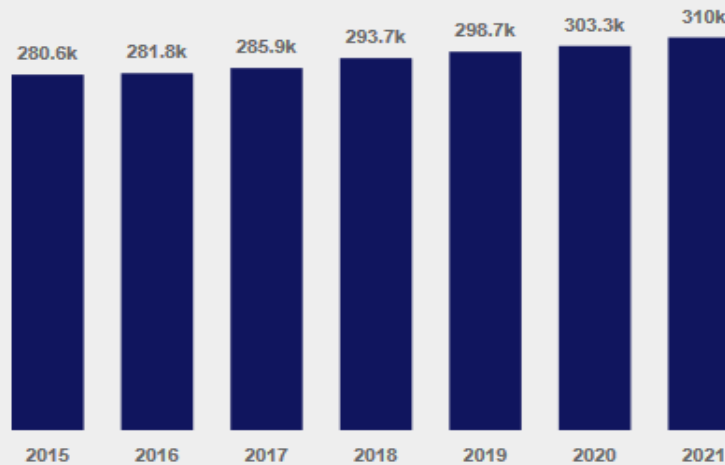
### Employment Status



### Employment by Region



### Predicted Employment



# Airline pilot

Aircraft pilot, co-pilot, captain

Airline pilots fly passengers and cargo to destinations around the world.

£ Salary	£20,000 to £140,000 Average per year	🕒 Hours	Variable per week
-------------	---	------------	----------------------

1. [Entry requirements](#)
2. [Skills required](#)
3. [What you'll do](#)
4. [Salary](#)
5. [Working hours, patterns and environment](#)
6. [Career path and progression](#)

## 1. Entry requirements

You'll need to:

- complete training for an [Air Transport Pilot Licence \(ATPL\)](#)
  - pass medical checks including hearing, eyesight and colour normal vision
- You'll start by training as a co-pilot. It takes 9 months to 3 years, depending on whether you have flying experience.

You could do a degree in aviation that includes pilot training, or get into this job through an airline's own scheme, like [British Airways' Future Pilot](#) or [Virgin Atlantic Future Flyers](#).

## 2. Skills required

You'll need:

- excellent hand/eye coordination
- the ability to remain calm and focused under pressure
- excellent communication skills

## 3. What you'll do

Your day-to-day tasks could include:

- carrying out pre-flight checks of instruments, engines, fuel and safety systems
- working out the best route using weather reports and information from air traffic control
- following instructions from air traffic control
- checking data during the flight and adjusting the route where necessary
- telling passengers and crew about journey progress
- writing reports about in-flight issues

You could also work in flight testing or flight training.

## 4. Salary

Starters: £20,000 to £30,000

Experienced: £35,000 to £90,000

Highly Experienced: £140,000

You could get benefits like bonuses or health insurance.

These figures are a guide.

## 5. Working hours, patterns and environment

Your working hours will depend on the flying time for each destination and could include nights, weekends and public holidays.

Working hours are strictly regulated for safety reasons.

## 6. Career path and progression

With experience, you could become a flight training instructor or an operations manager.

You could become an airline captain in 3 to 5 years after you get your full ATPL.

You could also train as a helicopter pilot, or join the RAF if under 25.

Last updated: 10 October 2018

### Elsewhere on the web

[Find an apprenticeship](#)

[Find a traineeship](#)

[Further education courses and funding](#)

[Start a business](#)

# Valuable workplace skills

The skills increasingly required, London businesses  
(responses have been weighted)

(Source: Deloitte analysis, 2014)



## OTHER ISSUES

Vacancies are not advertised on a single site  
- there is a dedicated site for many apprenticeships, in general, but the very large companies advertise their apprenticeships on their own website.

The actual number of apprenticeship vacancies for 16 year olds is far less than 17, 18 or older applicants. This is generally because they have the experience and, sometimes, health and safety requirements.

# Conclusion

- Making the 'perfect' decision is difficult but together we can support your child to make an informed decision:
- Family's discussion
- Teachers' advice
- Labour market information
- Careers support

# RESOURCE REFERENCES

[www.eclips-online.co.uk](http://www.eclips-online.co.uk) (plants65)

<http://skillsmatch.intelligentlondon.org.uk/>

<https://nationalcareersservice.direct.gov.uk>

The last Employer Skills Survey was carried out in 2015 and results from this survey can be viewed on the UKCES website:

<https://www.gov.uk/government/collections/ukces-employer-skills-survey-2015>